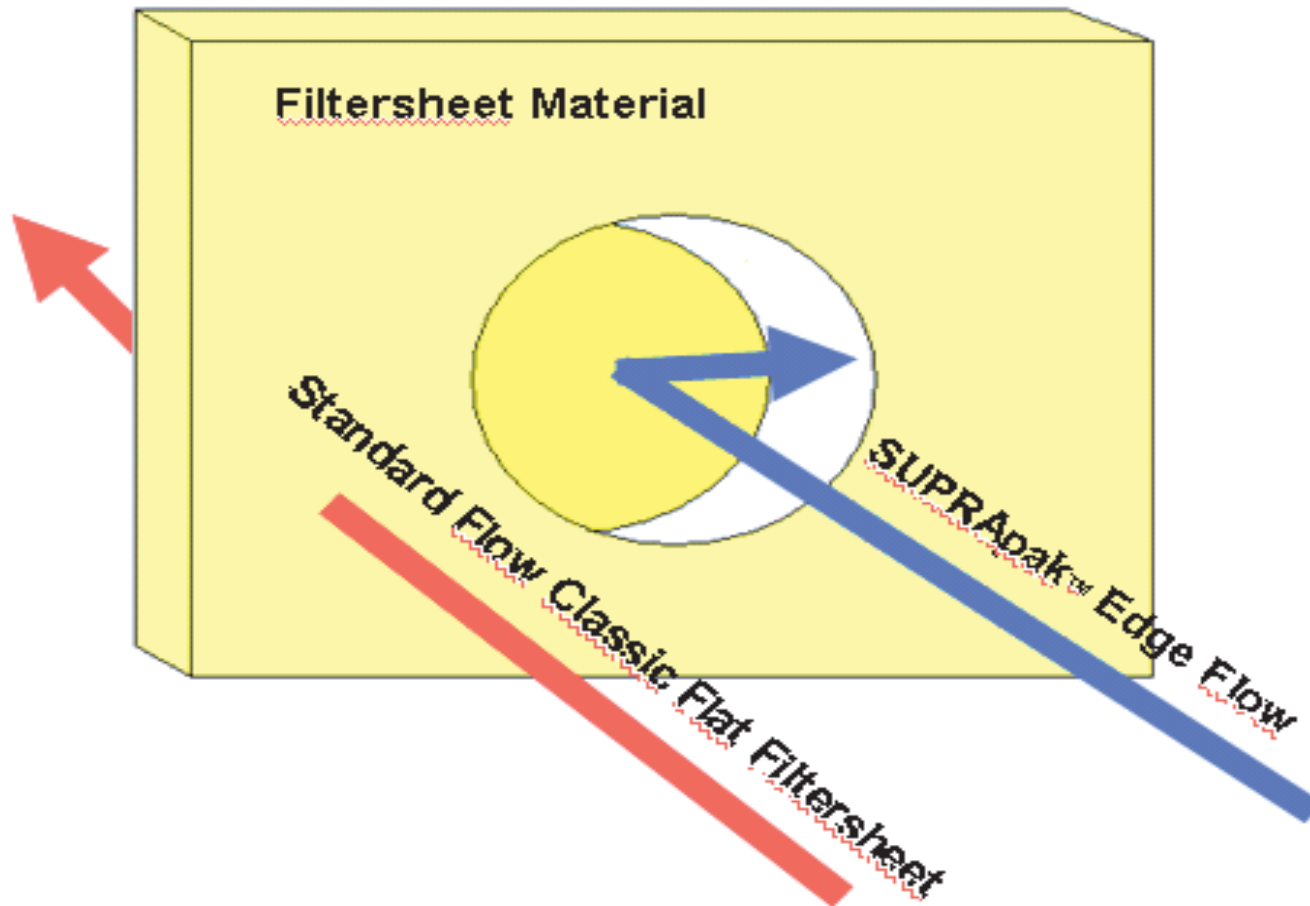
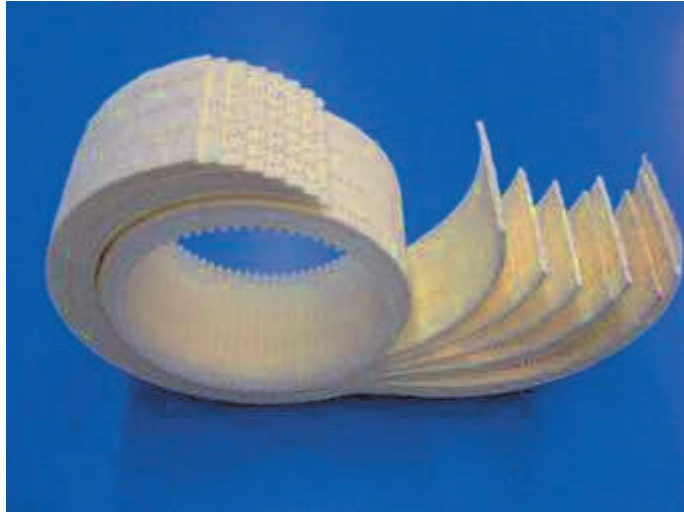




Food and Beverage

SUPRApak Module Depth Filtration: Edge Flow Principle





Holes punched in the SUPRApak modules direct the flow

**1 SUPRApak L module has
~ 500,000 punched holes**

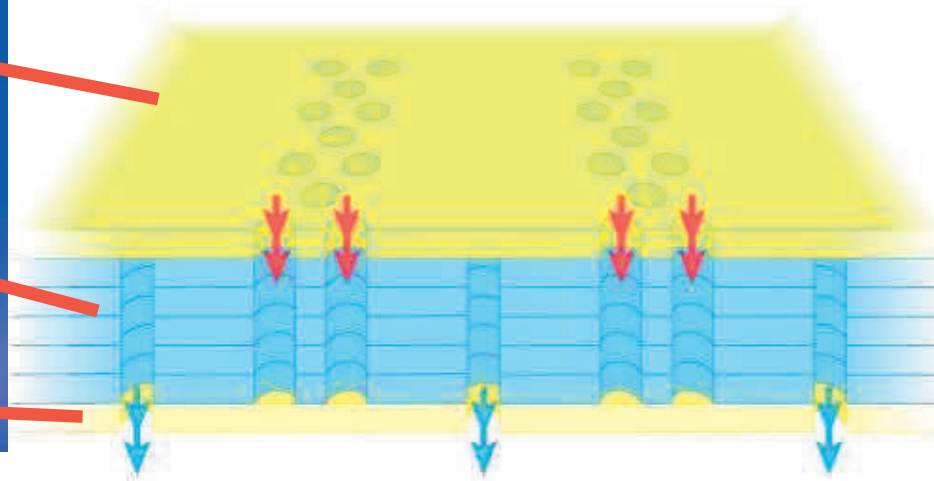
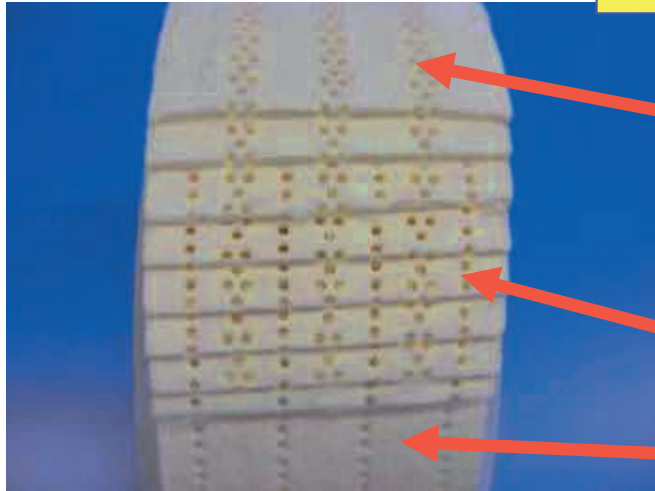
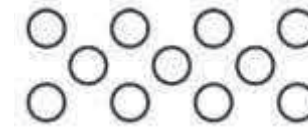




Food and Beverage

SUPRApak Module Depth Filtration: Edge Flow Principle

The first layers on the outer diameter of SUPRApak modules have only inlet holes



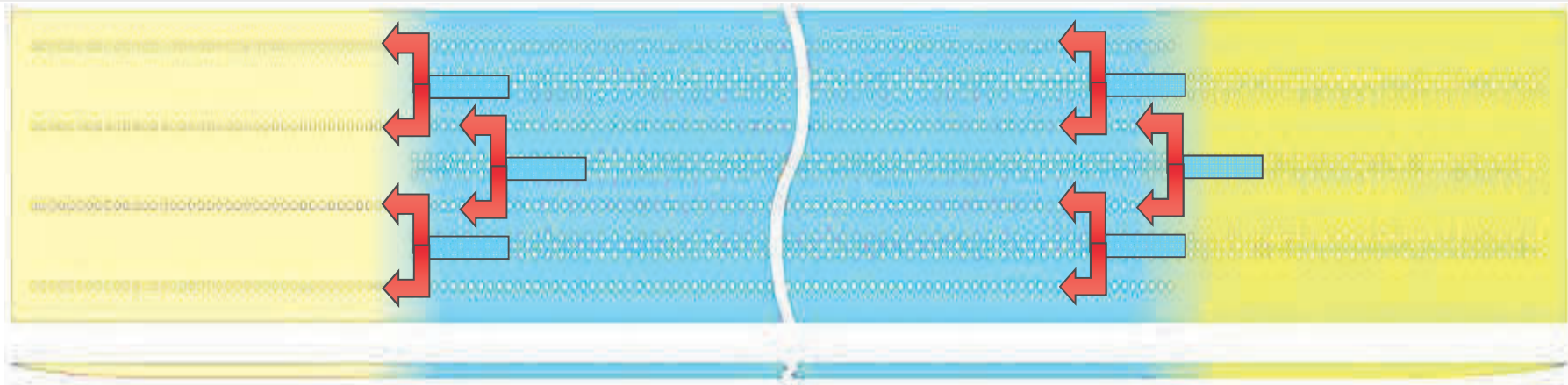
The final layers on the inner diameter of the SUPRApak modules have only outlet holes



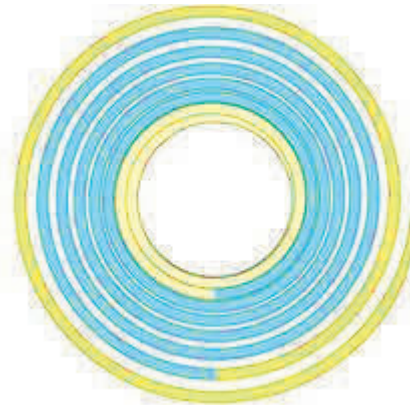


Food and Beverage

SUPRApak Module Depth Filtration: Edge Flow Principle



The final layers on the inner diameter of the SUPRApak modules have only outlet holes which are carrying filtered product only



The first layers on the outer diameter of SUPRApak modules have only inlet holes which are carrying unfiltered product only

